



Defense sets up winning score

Whippets use breaks to down Bellevue 16-14

By CARL RIDENOUR
Globe correspondent

In a game plagued by seven turnovers, the Shelby Whippets overcame adversity to win its first Northern Ohio League game 16-14 over the Redmen at the Bellevue Athletic Field.

"Both teams made a lot of mistakes," Shelby head coach Ron Stepsis said. "This game seemed to ebb and flow, and fortunately it ebbed and flowed in our favor at the right time (in the second half)."

"We didn't take advantage of the breaks in the first half like Bellevue did, but in the second half we capitalized on their mistakes and eliminated our own errors."

The Whippets are now 3-1 on the season and 1-0 in NOL play while the Redmen drop to 2-2 and 0-1.

The Shelby defense, led by senior linebackers Steve Steifel and Shawn Hollenbaugh, shut off the Bellevue run-and-shoot offense in the second half. For the game, Steifel and Hollenbaugh led the Hounds in tackles with 14 and 10 respectively.

As a whole, the Hungry Hound defense allowed just 21 yards in total offense in the second half—only two yards rushing—and the defense also put the Whippet offense in position for the decisive touchdown.

Steifel hauled in a tipped pass by Bellevue's Chris Turner and returned it 26 yards for an apparent touchdown, but the ball was brought back to the Redmen 23 yard-line because of a Shelby clipping penalty.

"All year long both of our linebackers have been pretty consistent, and they have come up with some big plays for us," Shelby linebacker coach Bill Adams said.

"Steve came up with the big interception to set up the offense for the winning touchdown, and Shawn stopped their off-tackle play all night by fling the hole well and stopping things at the line of scrimmage."

Adams continued, "The big key for us in the second half was getting pressure on their quarterback. We brought in Dean Kehres because of his quickness, and he and Mike Lybarger did an outstanding job of pressuring him."

Six plays after the turnover, sophomore tailback Doug Noblet darted into the end zone for the winning touchdown.

Amstutz added the PAT kick for the 16-14 score. Noblet did most of the running for the Whippets in the second half when he gained 53 of his 63 total yards to lead both teams in that category.

"Doug Noblet did a fine job for us tonight," said Stepsis of the sophomore. "All of our younger backs, Noblet, Brad Parsons, and Larry West, ran the ball extremely well considering their relative inexperience. They did very, very well hanging onto the ball and carrying the load when they had to."

The Whippets struck quickly in the first quarter when senior Jeff Rickens raced down the sidelines on a 55-yard punt return for a touchdown. For Rickens it was his first punt return in his football career with the Whippets.

"Jeff deserves some special praise for his job on punt returns," remarked Stepsis. "He was in a spot he's never been in before. That's a tough job to do, and he did it without questions."

Stepsis continued, "I just can't say enough about the job Jeff did for us tonight. Anyone who has ever returned punts before can tell you how tough it really is. It takes a lot of guts to stand out there and do that."

Special teams coach Bill Adams said of the effort, "We've been stressing a lot that we can return a punt for a touchdown, and the kids proved to themselves that they can. Jeff dodged the first guy and then the wall of blockers set up real nice the rest of the way."

Shelby lost the momentum they gained when in the second quarter, the Redmen used a Whippet turnover to score a touchdown.

Following a Shelby fumble on a punt return, the Redmen took the ball 44 yard in 10 plays for the score. Chris Turner scored from three yards out on a quarterback keeper with 0:34 remaining in the half.

Shelby got the momentum back early in the second half after the Whippets' first drive appeared to bog down.

Trailing 14-6, the Whippets punted the ball away to the Redmen when one of the Bellevue players was struck in the back by the bounding ball. Shelby sophomore Joe Gies alertly gathered in the loose ball giving Shelby possession at its

their lead, Dodgers second baseman Steve Sax said the club is trying to keep its cool.

"We're not feeling any pressure," said Sax after dropping a 5-3 decision to the Giants. "We're still 4 1/2 games ahead. The Giants are a last-place team but they play us tough. The rivalry seems to get them up for us. Right now, we're going through a flat spot and not getting the hits when we need them."

San Francisco, which has won two-of-three since Roger Craig took over as manager from Jim Davenport Wednesday, holds a 7-6 edge in the season series against Los Angeles. The Giants have spoiled the Dodgers' pennant hopes in the past and are primed to make life miserable for them again.

"They (the Giants) have nothing to gain, do they," asked Dodgers manager Tom Lasorda.

"This game just seemed to ebb and flow, and fortunately it ebbed and flowed in our favor at the right time (in the second half)."

—Ron Stepsis, Shelby

own 45-yard line. The Whippets moved into Bellevue territory and capped the drive with a Tim Amstutz field goal from 42-yards away. The three-pointer allowed the

Whippets to close the gap to 14-9 with 6:48 remaining in the quarter.

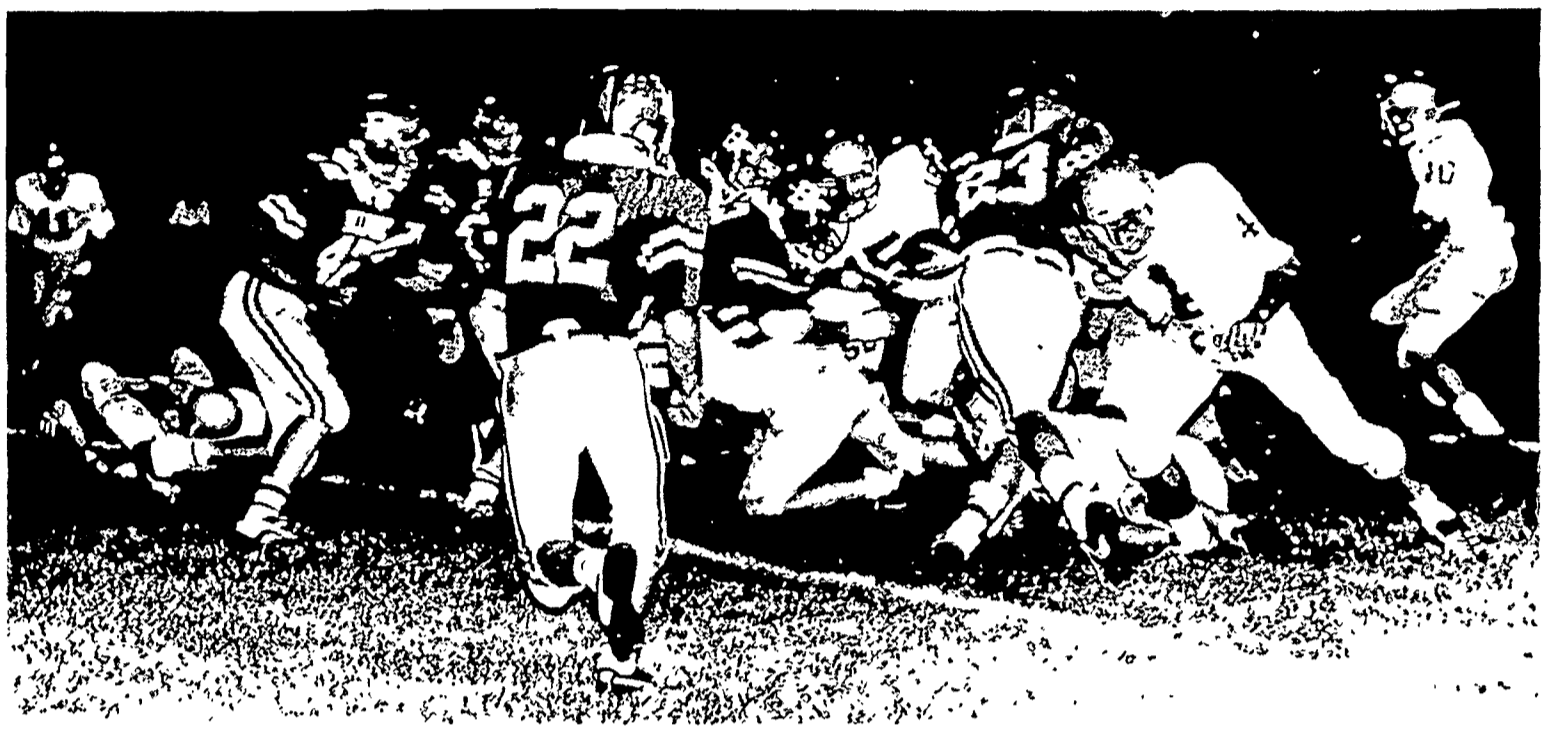
Shelby would go on to score the decisive touchdown, while holding the Redmen in check for

the full 24 minutes in the second half.

This week the Whippets host the Bucyrus Redmen in their second NOL game of the season. It is also Parent's Night for the Whippets.

Varsity Football stats table for Shelby vs Bellevue. Columns include team, First Downs, By Rushing, By Passing, By Penalty, Rushing Yardage, Passing Yardage, Passes (Comp-Att), Penalties-Yards, Punts-Avg, Fumbles-Lost, and Passes Int By.

Game Stats table for Bellevue vs Shelby. Columns include team, First Downs, By Rushing, By Passing, By Penalty, Rushing Yardage, Passing Yardage, Passes (Comp-Att), Penalties-Yards, Punts-Avg, Fumbles-Lost, and Passes Int By.



Daily Globe/Becky Brooks

Shelby quarterback Randy Fagg (15) fights for more yardage in the middle of the pile as the Whippets near the Bellevue goal line. Shelby scored 10 points in the third

quarter to rally past the Redmen 16-14 Friday night in the NOL opener for both schools.

Plymouth rallies past New London 29-24

By CHUCK RIDENOUR
Globe staff reporter

NEW LONDON—Two late, fourth-quarter touchdowns rallied undefeated Plymouth to a 29-24 come-from-behind victory over winless New London Friday night in a Firelands Conference slugfest.

The win was Plymouth's fourth in four tries while New London slipped to 0-4.

The first three quarters of action were highlighted by defensive play as the two teams battled to a 10-10 standoff, but in the final 12 minutes both squads accounted for 33 points.

The host Wildcats forged ahead 24-17 with 6:15 remaining in the game when Dan Cole fired a 20-yard pass to Brian Oney and Dave Hartley split the uprights with the extra-point kick.

New London then kicked off from the Plymouth 45-yard line (because the Big Red were slapped with a personal foul penalty after the touchdown reception) and attempted an onside kick. PHS, however, recovered the kick at its own 32-yard line.

A hand-off from quarterback Troy Keene went to Steve Hall on the reverse and Hall completed the flea-flicker call with a perfect spiral to Keene covering 29-yards and a first down at the New London 39 with 5:41 to play.

Keene then found a wide-open Jason Robinson at the Wildcats' five-yard line with a pass for 33-yards and another first down.

Two plays later, Bill Castle blasted his way into the endzone from three yards out that cut the lead to 23-24 with 4:30 left to play. Randy Myers' PAT kick

was off to the right and Plymouth remained a point behind.

Plymouth's defense rose to the occasion and forced New London to punt. The Big Red offense took control from the midfield stripe with 2:33 left in the game.

Keene completed passes to tight end Junior Porter for 22 and nine yards that pushed Plymouth to the 18-yard line. Two plays later Hall wrestled away a pass from a New London defender in the end zone for the game-winning score.

Hall finished the game with a six catch, and 136 yards. Keene completed 12 of 29 passes for 228 yards. Hall was one-of-two passing for 29 yards.

"This group of kids never quits," reflected coach Dick Roll of his squad's winning-effort.

"This bunch of kids drives me crazy because they show no emotion at all in practice, but they get the job done when they have to," Roll added.

A concern of Roll's after the game was the 214 yards his defense surrendered to the Wildcats.

"We have had trouble stopping the run all year and I don't know what the problem. We've been changing defenses and personnel, but things haven't changed. This week we will evaluate our defense."

Next Friday's opponent, Monroeville, flies into Plymouth with its run-and-shoot offense and that is cause for concern for Roll. Monroeville edged South Central 11-8 Friday night.

"Monroeville runs the run-and-shoot, but I wouldn't be sur-

prised to see them run and not shoot at us," said Roll in reference to the run defense of PHS.

Ken Ross, a three-year letterman for New London, ran wild against Plymouth, with 168 yards on 28 carries and one touchdown—a 14-yarder in the third quarter that tied the game at 10-10.

"Ken Ross is a stud," praised Roll. "He's the best back we have seen so far this year."

The Wildcats opened the scoring in the first quarter when they turned a Plymouth fumble into a 72-yard, 13-play drive that resulted in an 18-yard field goal by Hartley.

Plymouth bounced back with 10 second quarter points on a 1-yard run by Castle and a PAT kick and a 22-yard field goal by Myers.

The Big Red went out on top 17-10 when Keene laced a 62-yard scoring pass to Hall with 10:22 left to play in the third quarter.

The game was then deadlocked at 17-17 on a 21-yard run by Keith Shepherd 11:22 left in the fourth quarter.

The 24-point effort by New London pleased coach Bob Hasseman, who troops had scored only one touchdown in

three previous games. "Troy Keene and Steve Hall are a tough twosome. Hall made a tremendous play to get the ball on the final score," Hasseman said.

Plymouth had 326 yards of offense with 69 yards coming on the ground. New London was three of nine passing for 41 yards. Both teams had 10 first downs.

Varsity Football stats table for Plymouth vs New London. Columns include team, First Downs, By Rushing, By Passing, By Penalty, Rushing Yardage, Passing Yardage, Passes (Comp-Att), Penalties-Yards, Punts-Avg, Fumbles-Lost, and Passes Int By.

Reds close gap as Dodgers fall

United Press International. Satchel Paige once said: "Don't look back, something may be gaining on you."

The Los Angeles Dodgers should heed those words because the Cincinnati Reds are on their tail in the National League West.

The Dodgers lost their third straight Friday night, to the last-place San Francisco Giants, and saw their lead over the Reds dwindle to 4 1/2 games.

The Reds are excited about their chances of catching the Los Angeles Dodgers for the National League Western Division title as the season nears an end.

"I feel we have a good chance of winning the division," said the Reds' Max Venable. Venable collected his third game-winning RBI of the season in Cincinnati's victory over Houston.

Despite losing a big chunk of

Ever wonder why so many of your neighbors insure their cars with State Farm?

They'll probably tell you they like State Farm's unbeatable combination of service, protection, and economy. Ask any one of them, or give me a call.

DICK STANTON
34 E. Main St.
Shelby, Ohio 44875
342-5856



State Farm Mutual
Automobile Insurance Company
Home Office: Bloomington, Illinois

WATCH FOR Shelby Y Nautilus Center-Hydra-Fitness. Shelby Y Community Center. PO Box 45, W. Smiley Ave., Shelby 347-1312

WOODY RIDGE GOLF COURSE. SALE! 20% OFF. All merchandise except golf balls. Open Daily 8A.M.-8P.M. Ph. 347-1588

AL ROSSO FORD • MERCURY. 1984 Isuzu Pickup \$5777, 1983 Mustang Convertible \$9277, 1983 Ford Mustang \$7977, 1983 Chevy Cavalier \$3977, 1982 Toyota Pickup \$4977, 1982 Plymouth Turismo \$5477, 1982 Chrysler New Yorker \$9777, 1981 Olds Cutlass Supreme \$5277, 1981 Buick Regal \$5677, 1980 Ford Ltd. Crown Victoria \$5477, 1979 Chevy Corvette \$9877, 1979 AMX \$3477. 40 Mickey Road, Shelby. Mansfield 525-4100 Shelby 342-4060. HOURS: Monday, Thursday and Friday 9-9; Tuesday and Wednesday 9-6; Saturday 9-4.